

Provided by:



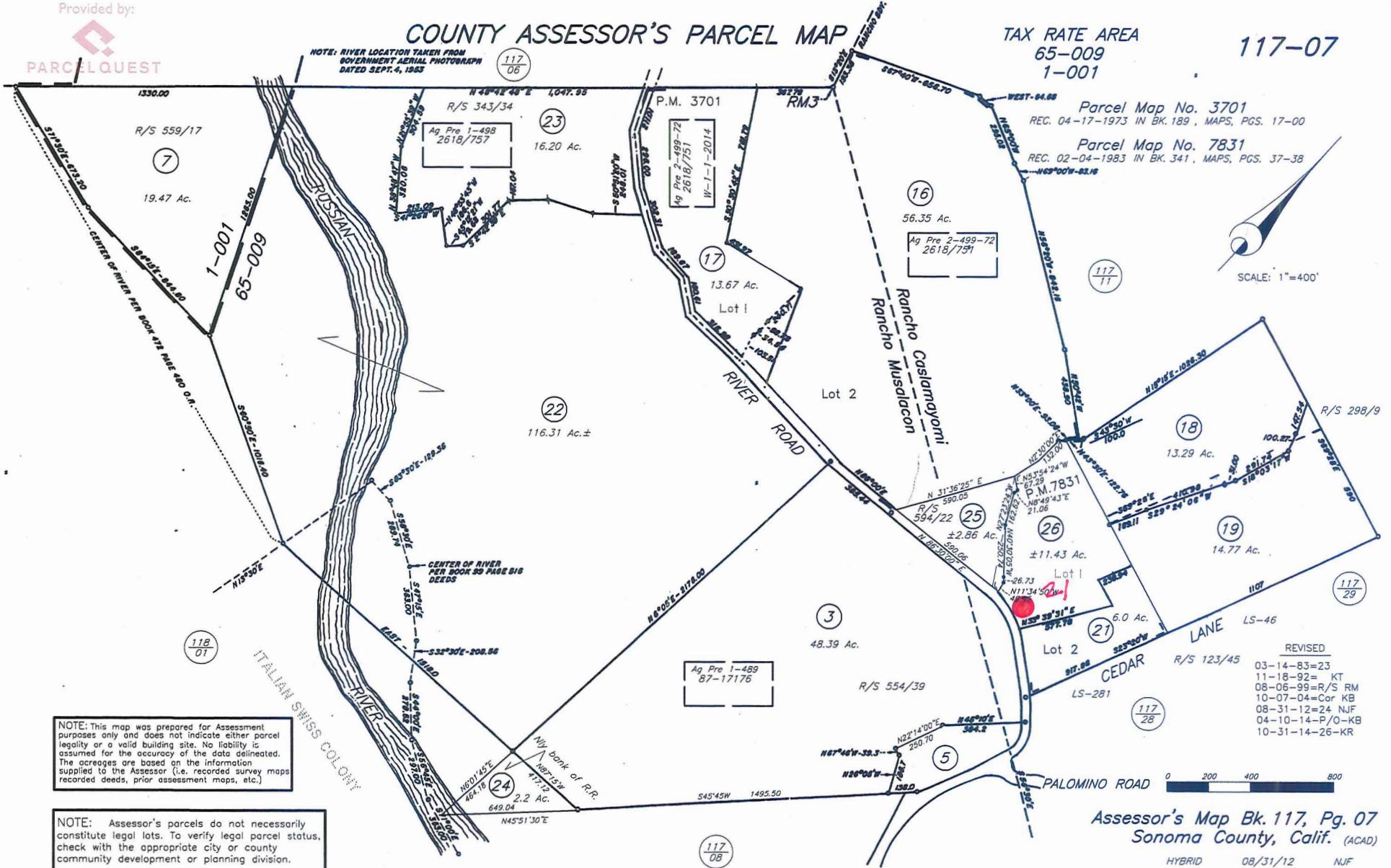
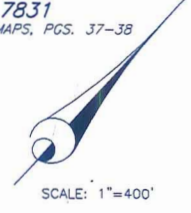
# COUNTY ASSESSOR'S PARCEL MAP

TAX RATE AREA  
65-009  
1-001

117-07

NOTE: RIVER LOCATION TAKEN FROM  
GOVERNMENT AERIAL PHOTOGRAPH  
DATED SEPT. 4, 1963

Parcel Map No. 3701  
REC. 04-17-1973 IN BK. 189, MAPS, PGS. 17-00  
Parcel Map No. 7831  
REC. 02-04-1983 IN BK. 341, MAPS, PGS. 37-38



NOTE: This map was prepared for Assessment purposes only and does not indicate either parcel legality or a valid building site. No liability is assumed for the accuracy of the data delineated. The acreages are based on the information supplied to the Assessor (i.e. recorded survey maps, recorded deeds, prior assessment maps, etc.)

NOTE: Assessor's parcels do not necessarily constitute legal lots. To verify legal parcel status, check with the appropriate city or county community development or planning division.

- REVISED
- 03-14-83=23
  - 11-18-92=KT
  - 08-06-99=R/S RM
  - 10-07-04=Car KB
  - 08-31-12=24 NJF
  - 04-10-14=P/O-KB
  - 10-31-14=26-KR

Legend  
● = Fire Hydrant

Palomino Lakes Mutual Water Co.  
Fire Hydrants  
Page 1 of 4  
2-13-2021

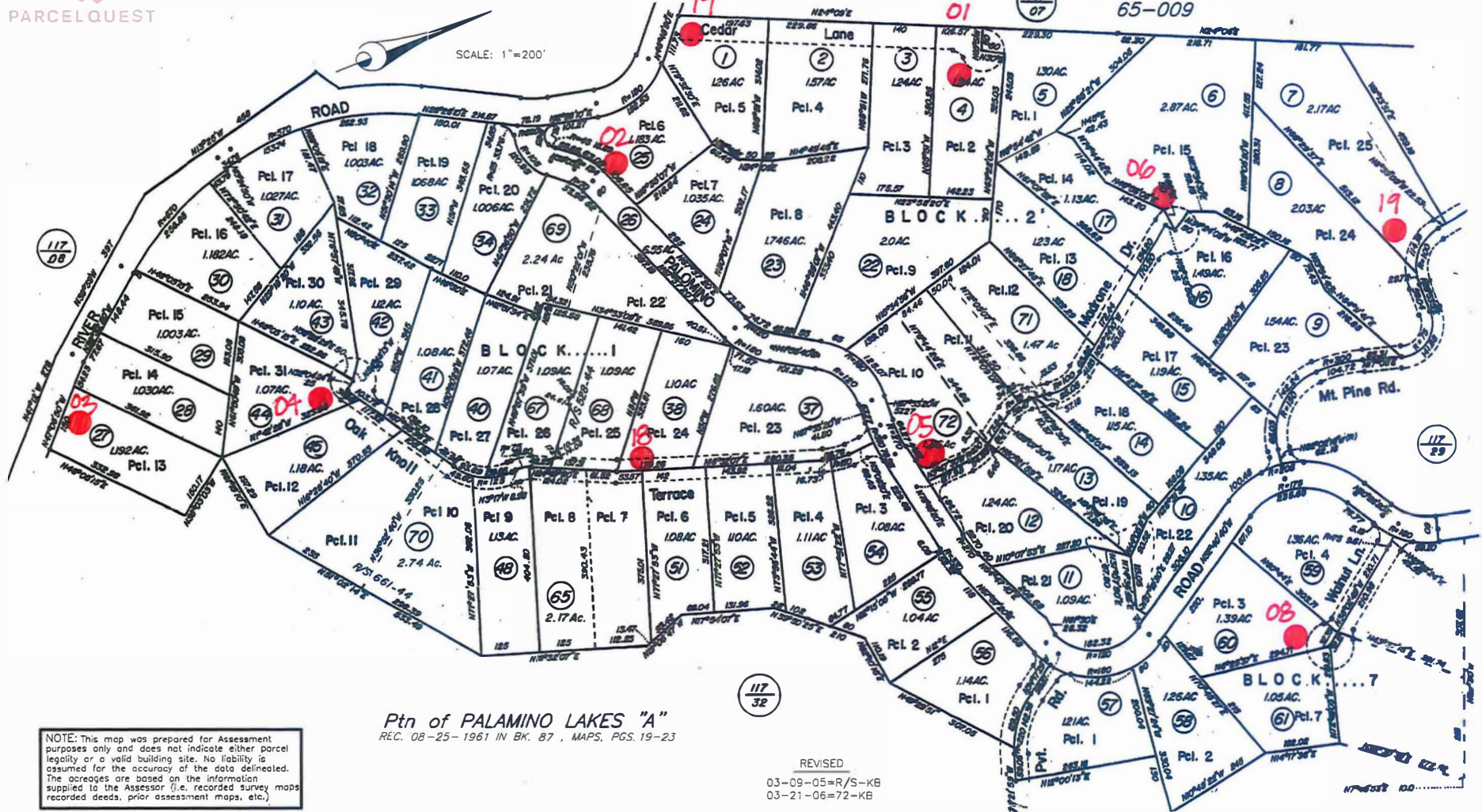
Assessor's Map Bk. 117, Pg. 07  
Sonoma County, Calif. (ACAD)  
HYBRID 08/31/12 NJF

# COUNTY ASSESSOR'S PARCEL MAP

TAX RATE AREA  
65-009

117-28

SCALE: 1"=200'



Ptn of PALAMINO LAKES "A"  
 REC. 08-25-1961 IN BK. 87, MAPS, PGS. 19-23

NOTE: This map was prepared for Assessment purposes only and does not indicate either parcel legality or a valid building site. No liability is assumed for the accuracy of the data delineated. The acreages are based on the information supplied to the Assessor (i.e. recorded survey maps, recorded deeds, prior assessment maps, etc.)

NOTE: Assessor's parcels do not necessarily constitute legal lots. To verify legal parcel status, check with the appropriate city or county community development or planning division.

REVISED  
 03-09-05=R/S-KB  
 03-21-06=72-KB



Assessor's Map Bk. 117, Pg. 28  
 Sonoma County, Calif. (ACAD)

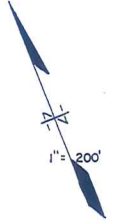
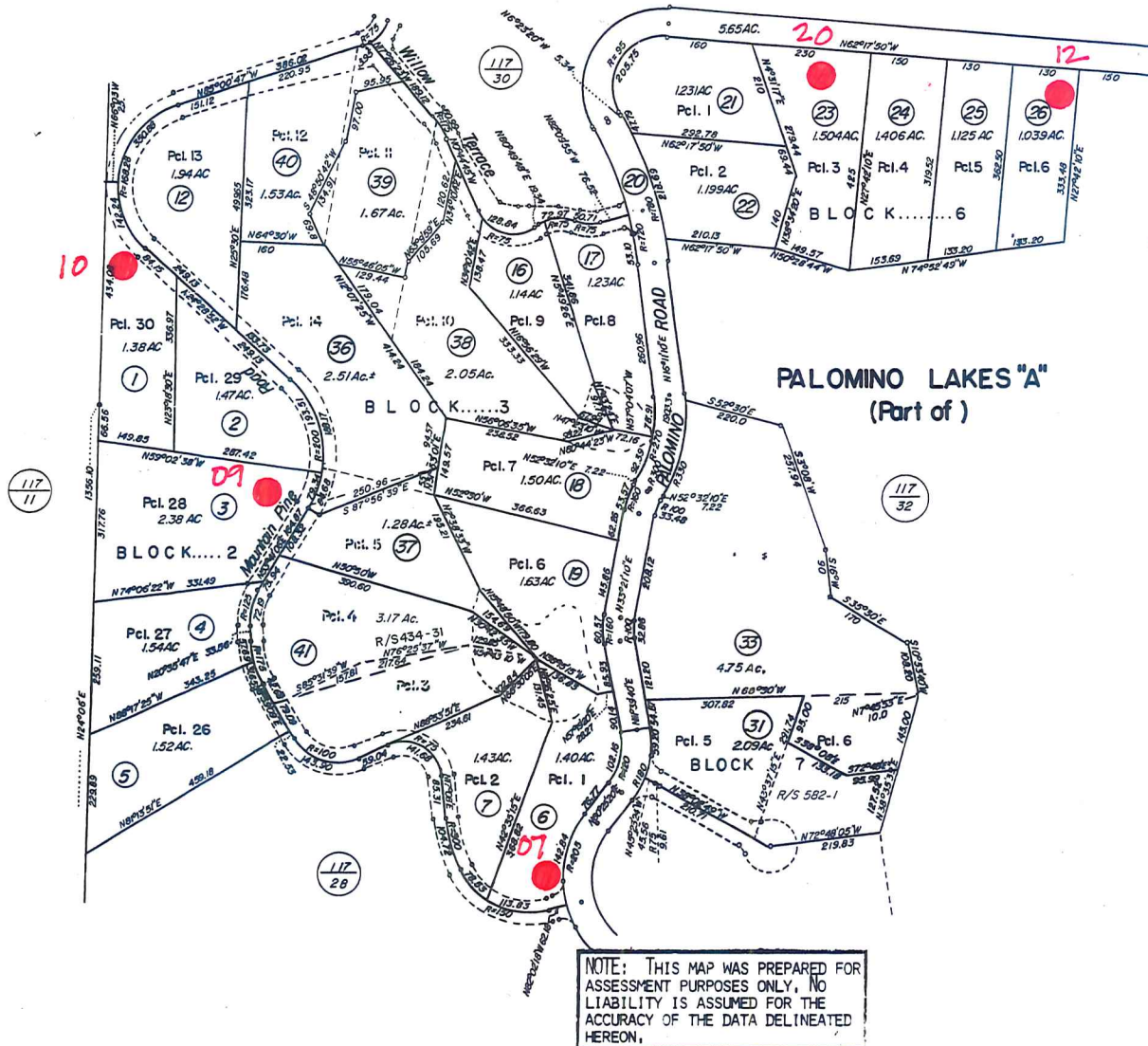
HYBRID 06-06-14 KB

*Palomino Lakes Mutual Water Co.  
 Fire Hydrants  
 Page 2 of 4  
 2-13-2021*

COUNTY ASSESSOR'S PARCEL MAP

TAX RATE AREA  
 65-009

117-29



- REVISED
- 2-28-79=32
  - 12-04-80=33
  - 1-4-90=35CN
  - 10-22-91=37KT
  - 7-21-93=40KT
  - 9-16-98=R/S RM
  - 11-4-99=41 RM

NOTE: THIS MAP WAS PREPARED FOR ASSESSMENT PURPOSES ONLY, NO LIABILITY IS ASSUMED FOR THE ACCURACY OF THE DATA DELINEATED HEREON.

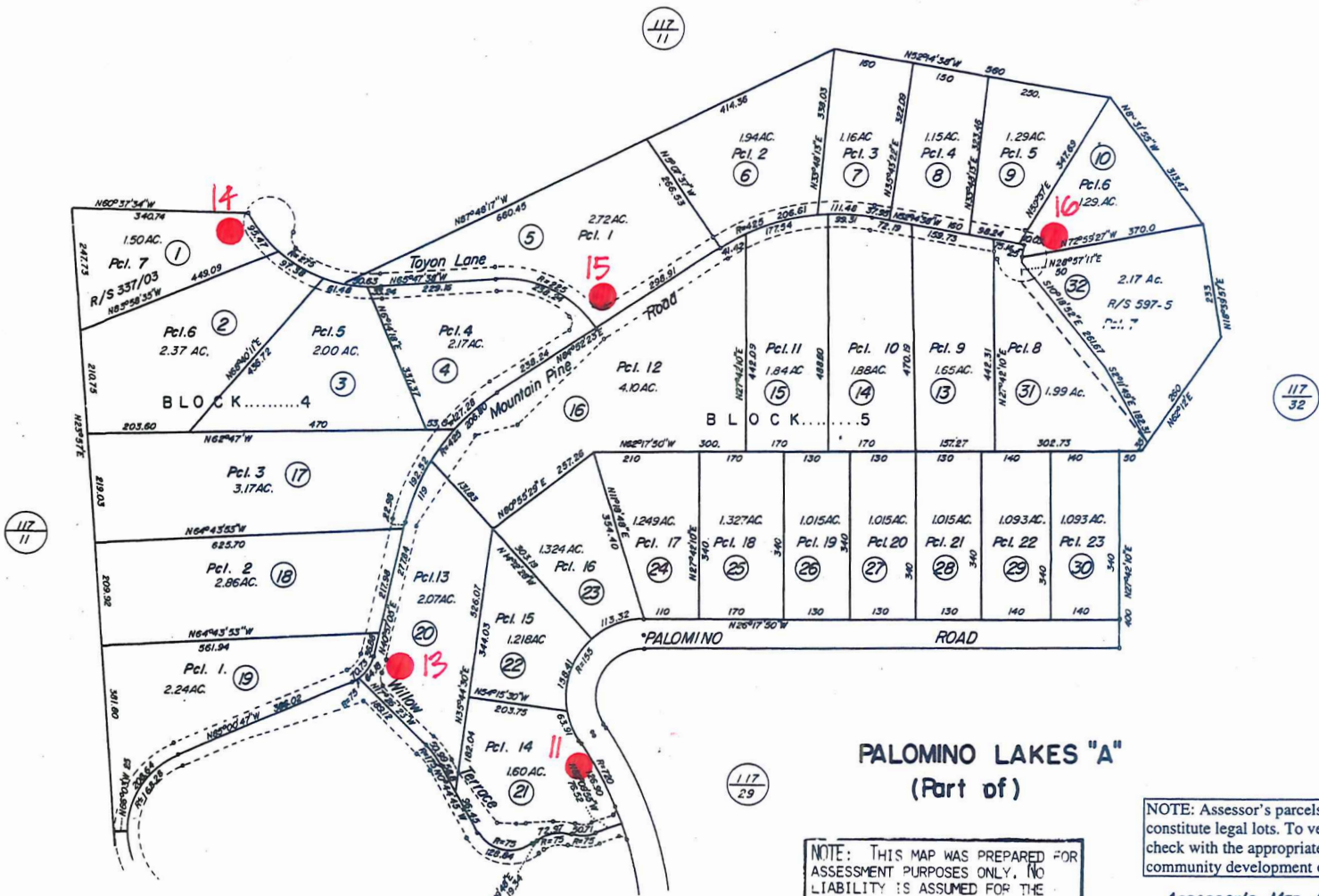
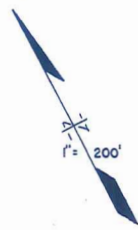
Assessor's Map Bk. 117 Pg.29  
 Sonoma County, Calif.

*Palomino Lakes Mutual Water Co.  
 Fire Hydrants  
 Page 3 of 4  
 2-13-2021*

**COUNTY ASSESSOR'S PARCEL MAP**

TAX RATE AREA  
**65-009**

**117-30**



**PALOMINO LAKES "A"  
 (Part of)**

NOTE: THIS MAP WAS PREPARED FOR ASSESSMENT PURPOSES ONLY, NO LIABILITY IS ASSUMED FOR THE ACCURACY OF THE DATA DELINEATED HEREON.

Revised  
 2-28-74  
 09-07-82=R/S  
 11-18-99=32 RM  
 2-14-06=Ac Corr. KB

NOTE: Assessor's parcels do not necessarily constitute legal lots. To verify legal parcel status, check with the appropriate city or county community development or planning division.

Assessor's Map Bk. 117 Pg.30  
 Sonoma County, Calif.

*Palomino Lakes Mutual Water Co.  
 Fire Hydrants  
 Page 4 of 4  
 2-13-2021*